

## Customer service

At your service with a continual development of products and services.  
We are dedicated to properly interpreting the various demands of a continually changing market.



-  STOCK
-  QUICK DELIVERY
-  HASSLE FREE PRICING
-  ORDER PROCESSING
-  CUSTOM MADE PLATES
-  ENGINEERING
-  RESEARCH SUPPORT

## We are always with you

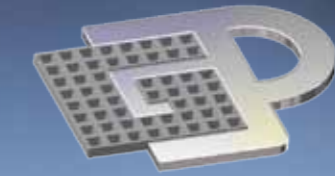
### Nothing is left to chance.

Connect to [www.gattiprecorvi.com](http://www.gattiprecorvi.com) and access the "calculation open area" and calculate the percentage of open area for every type of perforation, generate designs to scale 1:1 and export in electronic format (drawings). This service is available in order to meet the most complex needs during planning and development phases.



Ask for the "calculation open area" software or use it on-line.

www.studiolodetti.it



# GATTI PRECORVI



**GATTI PRECORVI** S.r.l.

Via Lombardia, 1 - 24030 Medolago (BG) Italy  
Tel. +39 0354993311 Fax +39 0354993402  
[info@gattiprecorvi.com](mailto:info@gattiprecorvi.com) - [www.gattiprecorvi.com](http://www.gattiprecorvi.com)



**ENGINEERED PERFORATED  
AND EMBOSSED METAL ITEMS**

## Company

### A PROVEN RELIABILITY

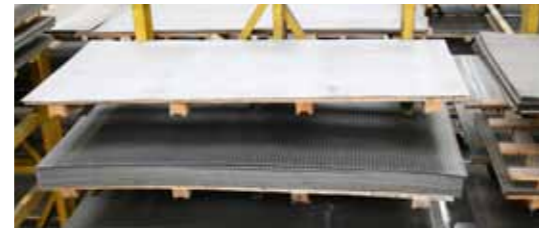
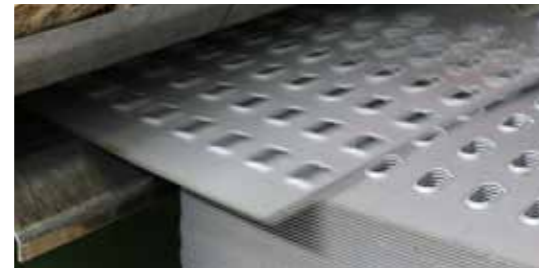
**Gatti Precorvi** has operated in the perforated steel sector since 1941 with a 15.000 square meters covered facility that fabricates one of the highest quality products of its kind in Europe, with the capability of satisfying the most technical requirements of the market.

The Company complies with UNI EN ISO 9001:2008 since 1999.



### WE UNDERSTAND YOUR NEEDS

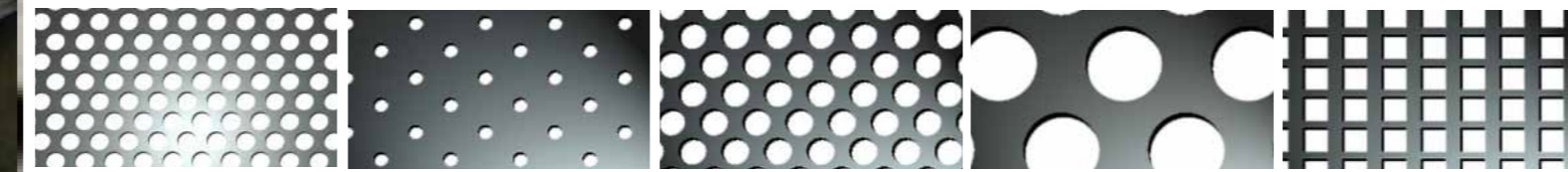
Gatti Precorvi has always worked closely with clients and is able to form, cut, bend perforated and embossed plates as well as perform superficial treatments such as polishing and painting. Component assembly is also available



## Perforated plates

We manufacture perforated plates from many various combinations of materials (mild steel, galvanized steel, stainless steel, stainless steel, copper, brass, prepainted steel, plastic, or alloys), thicknesses (from 0.2 up to 12 mm.), sizes ( up to mm. 2000 x 8000) and type of holes (round, square, round end slots, rectangular, decorative, raised).

More than 50.000 pieces in stock always available in standard commercial sizes 1000 x 2000 and 1250 x 2500



## Embossed plates

We manufacture embossed plates in standard patterns (round, square, rhomboidal, half sphere ) as well as special designs according to customer requirements of material ( mild steel, galvanized steel, stainless steel, aluminium), thickness (from 0.5 up to 5 mm.) and sizes (up to 2000 x 8000).



## Applications

Our products are widely utilized in various industries such as home appliances, automotive, urban furniture, architecture, soundproofing and filtration and wherever there is a need of controlled flow of liquid, light or sound



## SUNBREAKERS

We manufacture panels and complete sunbreaker systems which provide considerable energy savings when optimally oriented. We also offer the covering of facades, buildings and civil architecture. These products can be created in a wide range of dimensions, perforations, colours, and shapes which add aesthetic and functional value to a structure according to customer needs



## Engineering

Thanks to our team of specialized technicians and project managers, Gatti Precorvi is the ideal partner for the development and realization of turn key operations, from plans to project completion.

